



Measuring and supporting
child wellbeing

“Without a **robust** and **reliable** measure of child **wellbeing** we are flying blind in our efforts to **improve the lives of children** in any meaningful way”

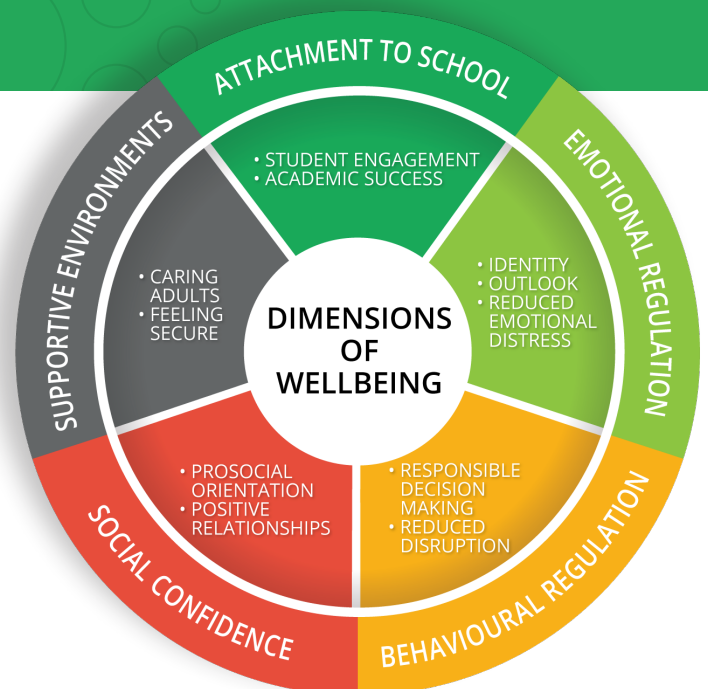
Alasdair Roy OAM

Child Rights Specialist / Consultant Psychologist

The RealWell Child Wellbeing Measure is a world first.

It offers a scientifically validated process for assessing multiple dimensions of child wellbeing that align with major national frameworks such as “The Nest” from ARACY. It is coupled with an engaging game interface that facilitates assessment with 6-to-12-year-old children.

“It helped me think about the way I feel – it was fun!” (Kari, 9)



The game, called **Rumble's Quest**, presents children with an opportunity to report their own feelings and sense of wellbeing as they embark on an exciting quest with their new friend Rumble.

During the game, children engage in fun tasks that challenge them to exercise executive skills such as working memory, cognitive flexibility, impulse and attention control.

RealWell provides practical resources to support your efforts to take positive action.

realwell.org.au

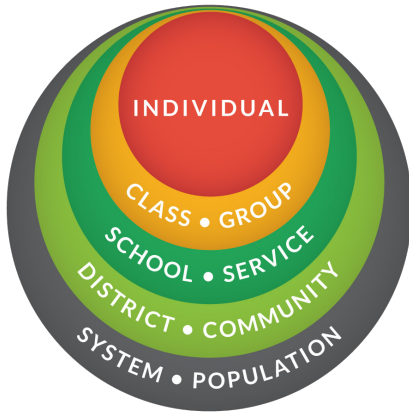


RealWell

Rumble's Quest was designed for use by schools and other organisations who work with primary school-aged children.



MEASURE, REPORT, AND SUPPORT WELLBEING AT MULTIPLE LEVELS



The RealWell Child Wellbeing Measure is an integrated system that includes:

- 1 The **Rumble's Quest game app** which children can play on desktops, laptops or iPads,
- 2 A **user management and administration dashboard** that incorporates an extensive self-guided support package.
- 3 Comprehensive **reporting functionality** that enables users to gain powerful insights into child wellbeing.

“Great data that helped us go forward with confidence to restructure our student support program” (Tom, Deputy Principal)

FROM INSIGHT TO IMPACT

RealWell enables schools and organisations to collect, report, and use their own reliable data to make decisions, drive action in support of wellbeing, and create responsive environments so **all children in their care might flourish**.

The easy-to-use assessment system is suitable for wide-scale use in non-clinical settings and is an efficient way to measure wellbeing at multiple levels. It is a reliable tool to measure child wellbeing for program and policy planning; to evaluate the impact of supportive initiatives; or to monitor trends in wellbeing over time.



SCIENCE SERVING PRACTICE

This innovative system is built on a robust foundation of applied research conducted at Griffith University, with the support of the Australian Research Council, and translated into real-world practice with comprehensive input from schools and organisations.

